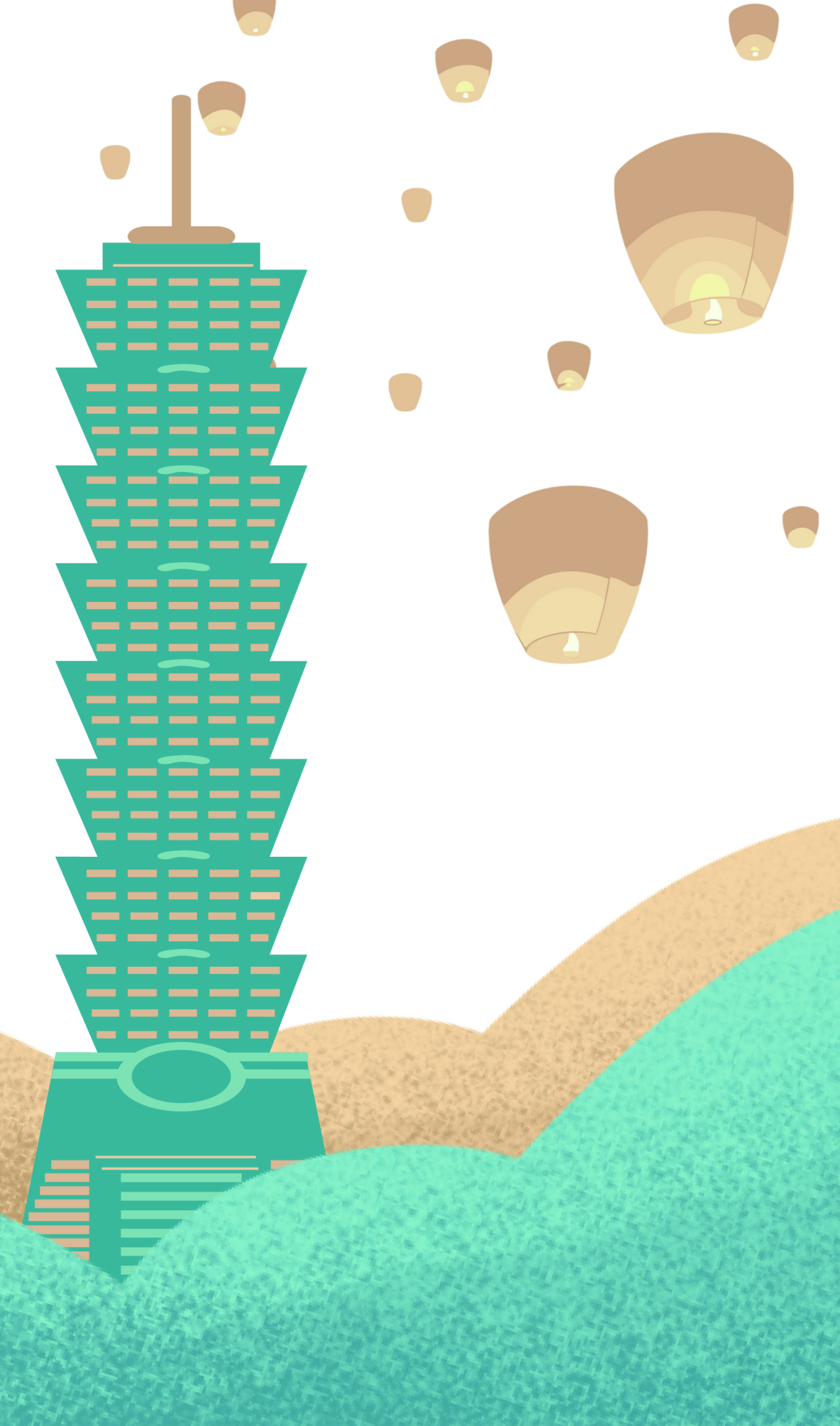


TALENT AROUND THE WORLD, **Explore Your Future Career in Taiwan!**

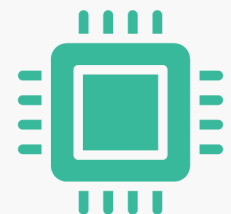
- Foreign Specialist Professionals
- General Foreign Professionals
- Overseas Compatriot & International Student Graduates



WHY CHOOSE TAIWAN?

Your Work Here Is Not Just a Job. It's a Platform to Shape Your Career and Life.

As the global tech wave shifts to AI and semiconductors, Taiwan sits at the core of these critical industries. Choose Taiwan to stay on trend and amplify your professional value. With robust international talent policies, combined with high-quality healthcare and an excellent living environment, Taiwan can become your second home.



Industry Powerhouse

Global hub for semiconductors, AI, and high-performance computing.



Unmatched Quality of Life

National Health Insurance, high-quality medical care, and a safe, welcoming environment.



Career Flexibility & Security

From policies offering high career flexibility for Employment Gold Card holders, to a 2-year open work period for Overseas Compatriot and international graduates.

WHY CHOOSE TAIWAN?

Tailored Pathways for Your Career Needs

Taiwan's talent system comprehensively matches the needs of different backgrounds and career stages.



Top-Tier Experts

Applicable to global experts with special expertise or outstanding achievements.

★ A high degree of career autonomy and dedicated tax incentives.



White-Collar Professionals

Applicable to professionals across fields.

★ Significantly lowers the threshold to come to Taiwan and provides an upgraded, secured future.



Recent Graduates

Applicable to Overseas Compatriot and international students who obtain a degree in Taiwan.

★ A seamless transition from campus to workplace, with a 2-year open-work period.



Foreign Specialist Professionals

Take full control of your career.

Put your career worries to rest with the **Employment Gold Card**



4-in-1: Work Permit + Resident Visa + Alien Resident Certificate (ARC) + Re-entry Permit



Career freedom: No separate work permit required. Employment Gold Card holders are not tied to a single employer and are free to switch jobs.



Tax incentives: For first-time approved workers in Taiwan, the portion of salary income exceeding NT\$3,000,000 is taxed at 50% for 5 years.



Family support: Spouses may work; lineal ascendants may enter Taiwan and stay for family visits.



General Foreign Professionals

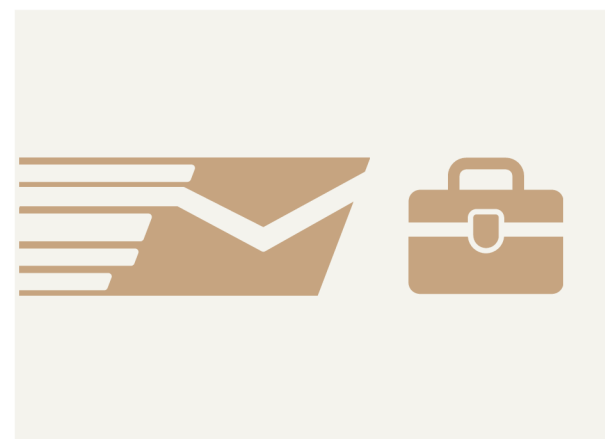
Lower thresholds and a more secure future.

Lower Thresholds



Graduates of the world's top 200 universities

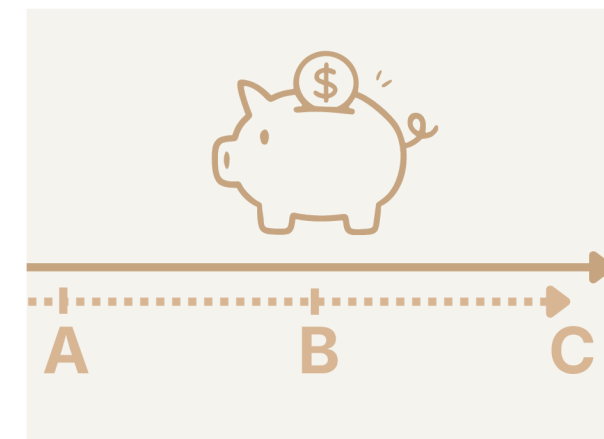
Eligible to apply for a 2-year individual open work permit.



Graduates of the world's top 1,500 universities

Exempt from the 2-year work-experience requirement for professional/technical roles.

A More Secure Future



Covered by the Labor Pension Act (new system)

Employers contribute to an individual pension account—portable and transferable.



Job-seeking visa

Eligible to apply for a job-seeking visa of up to 6 months.



Overseas Compatriot & International Student Graduates

The Golden 2-year Open Work Period



What does "open work" mean to you?

- **2-year open work period:** no work permit required
- **Flexible career choices:** full-time, part-time, or project-based
- **Bridge to long-term development:** transition to the General Foreign Professional talent track

Fast-Track Your Permanent Residency in Taiwan

Foreign Specialist Professional

Normal Timeline

3 years; could be as fast as 1 year if certain conditions are met

Taiwan Degree Holders Fast-Track

Holders of a Taiwan master's degree or higher may receive 1 to 2 years of "deduction"

General Foreign Professional & Overseas Compatriot/International Student

Normal Timeline

5 years

Taiwan Degree Holders Fast-Track

Holders of a Taiwan associate degree or higher may receive 1 to 3 years of "deduction"

Family support: after obtaining PR, spouses, children, and adult children with disabilities may also apply; the whole family can access social security services (employment insurance, disability services, long-term care services).

Ready to Launch Your Career in Taiwan?

From jobs, visas, and residency to everyday life, Talent Taiwan provides one-stop support.
Contact us now and let our team help guide your next step.



help@talent.nat.gov.tw



+886 2 7733 7660



2F, No. 9, Lane 85, Songjiang Rd,
Zhongshan District, Taipei City, 104